

Shoppes of Douglas

Douglas, Georgia

FOR LEASE – 6,000 SF ENDCAP

RETAIL – RESTAURANT - OFFICE - MEDICAL
1345 Bowens Mill Road S.E., Douglas, Georgia

- ✓6,000 SF Rue 21 space available.
- ✓Hibbett Sports and Dollar Tree are co-tenants.
- ✓Pylon on Bowens Mill Road
- ✓Shoppes of Douglas is located in the city of Douglas in Coffee County.
- ✓Coffee County is recognized as one of the most progressive communities in south Georgia.
- ✓Coffee County has grown at a rate of 13.2% between 2000 and 2010.
- ✓Shoppes of Douglas is located in close proximity to South Georgia State College.



Contact:
Howard Ball
 O (404) 995-1780
 C (770) 883-2883
howard@altuscrea.com

ALTUS Commercial Real Estate LLC
 5755 North Point Pkwy., Suite 84
 Alpharetta, Georgia 30022

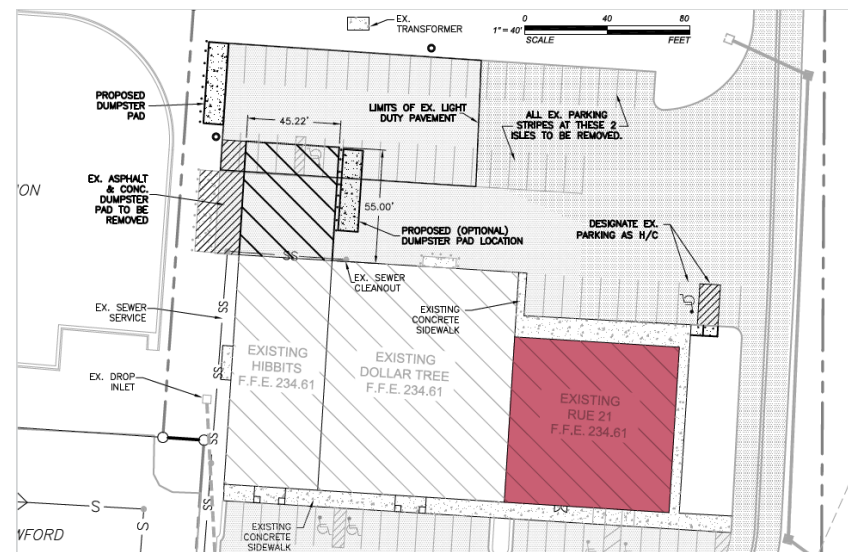
	1 mile	3 mile	5 mile
Population			
2018 Population	3,793	14,618	22,886
2023 Projected Population	3,786	14,745	23,123
2018 Average Household Income	\$41,871	\$46,725	\$50,283
2023 Projected Household Income	\$45,680	\$51,536	\$55,884
Drive Time Population			
	5 Minutes	10 Minutes	15 Minutes
2018 Population	6,158	21,014	30,703
2023 Projected Population	6,223	21,269	31,163

Shoppes of Douglas

Douglas, Georgia

FOR LEASE - 6,000 SF ENDCAP

RETAIL – RESTAURANT - OFFICE - MEDICAL
1345 Bowens Mill Road S.E., Douglas, Georgia



Contact:
Howard Ball
O (404) 995-1780
C (770) 883-2883
howard@altuscrea.com

Suite	Sq. Ft.	Tenant
A	Hibbett Sports	
B	Dollar Tree	
C	6,000 SF AVAILABLE	